

4"-12" INSTA-VALVE® 250

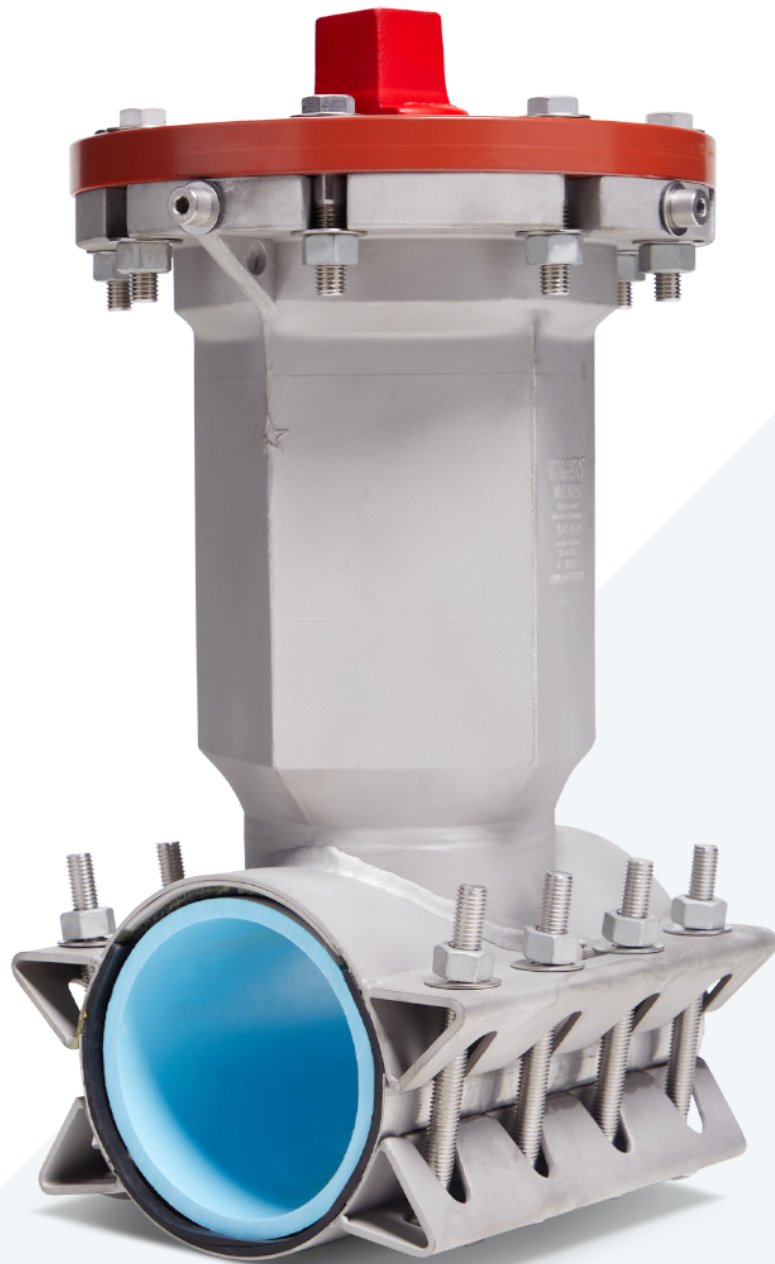
The reliability, strength, quality and value are unmatched.
When your project calls for the best, specify an Insta-Valve insertion valve.

KEY FEATURES

- 250 psi working pressure
- Requires no system shutdown
- Eliminates 100 percent of the costs related to shutting down a system
- Engineered valve cartridge for a drip tight seal
- Exceeds AWWA C509/515 Proof of Design Standards
- Maintains NSF 61 and ANSI 372 certification by UL
- Stainless steel construction
- Permanent asset for site-specific control
- Can be installed on all common pipe types in any orientation in as little as 1 hour
- No need to ream or sever the pipe, only a single tap needed for installation
- AIS-compliant option available
- Bevel gear available for horizontal installation

HOW IT WORKS

The installation of the Hydra-Stop Insta-Valve 250 insertion valve is accomplished through a single circular hole – commonly known as a “tap” – cut under full line pressure into the top of the pipe without the need to ream or sever the pipe. By installing the Insta-Valve 250 right where a control point is needed, you gain a permanent asset allowing system control and maintenance in the same manner as a resilient seated gate valve.



FREQUENTLY ASKED QUESTIONS

Q. What sizes are available?

A. The Insta-Valve 250 is available in 4" through 12" diameters.

Q. Can the Insta-Valve 250 be installed off-center?

A. Yes. The Insta-Valve 250 can be installed in any position on the pipe.

Q. Does the Insta-Valve 250 work with all common types of pipe?

A. Yes. The Insta-Valve 250 can be installed on all common types of pipes, including AC, CI, DI and PVC pipe.

Q. How many excavations are required to install an Insta-Valve 250?

A. Only one small excavation is needed to install the Insta-Valve 250, requiring an excavation size as little 5' x 5'.

Q. Does the Insta-Valve 250 install easily?

A. Yes. The Insta-Valve 250 can be installed in as little as one hour. Simply mount the Insta-Valve 250 valve body, make a simple tap with your Hydra-Tapper™ and install your Insta-Valve 250 valve cartridge.

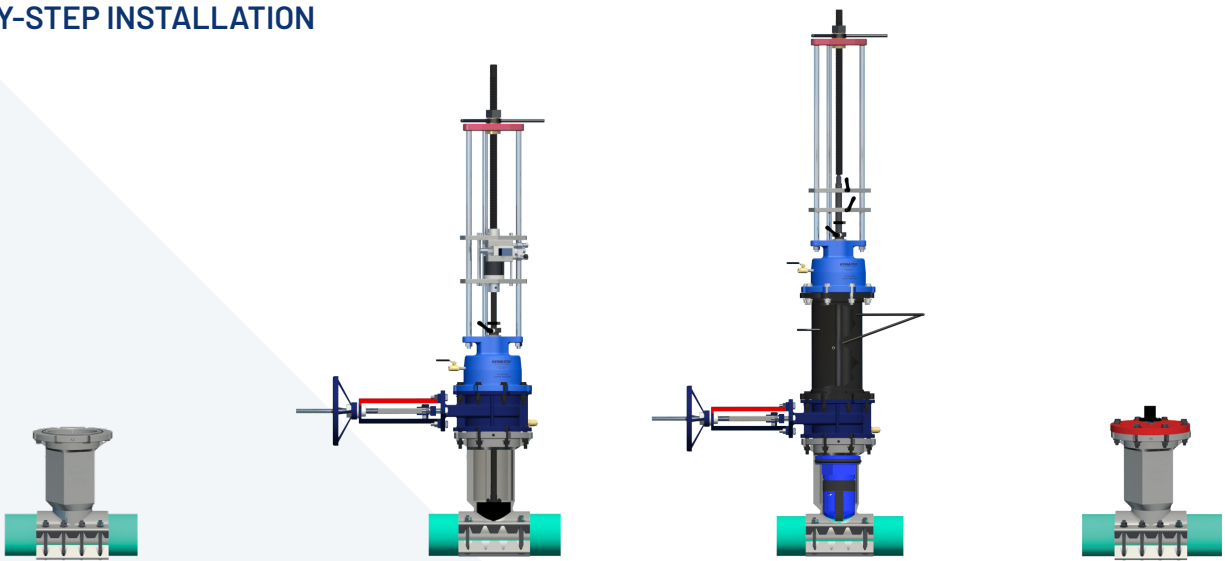
Q. How does the Insta-Valve 250 seal?

A. The Insta-Valve 250 seals in three ways: throat gasket, wipe seal and valve paddle. Working together, these seals optimize the sealing characteristics of the Insta-Valve 250, providing the best performance and reliability of any valve insertion technology available today.

Q. Is the Insta-Valve 250 a permanent valve?

A. Yes, the Insta-Valve 250 is a permanent valve designed to provide years of trouble-free operation.

STEP-BY-STEP INSTALLATION



Step 1: Mount and pressure test

Step 2: Perform tap

Step 3: Insert cartridge

Step 4: Operate valve as needed

HYDRA-STOP
▶ FROM PENTAIR

© 2025 Pentair Inc. All Rights Reserved.

144 TOWER DRIVE SUITE A, BURR RIDGE, IL 60527
PH: 708.389.5111 | E: CONTACT_US@HYDRA-STOP.COM | HYDRA-STOP.COM

Because we are continuously improving our products and services, Hydra-Stop from Pentair reserves the right to change specifications without prior notice.