

INSTA-VALVE 250 SUCCESS STORY

ADDING A CONTROL POINT IN A BUSY INTERSECTION WITHOUT DISRUPTION

THE CHALLENGE

In August 2025, the Town of Niskayuna faced a complex infrastructure challenge at a busy intersection connecting a state and county road. The team needed to abandon an aging valve located next to a 12-inch gas main, but the confined space and proximity to critical infrastructure made traditional replacement methods unsafe and impractical.

Compounding the challenge, the area served two doctor's offices, a dentist office, a school, and multiple residential homes, making shutdowns nearly impossible without significant community impact. Utility crews needed a safe and efficient solution that would allow them to replace the valve without disrupting water service or disturbing the adjacent gas main.

THE SOLUTION

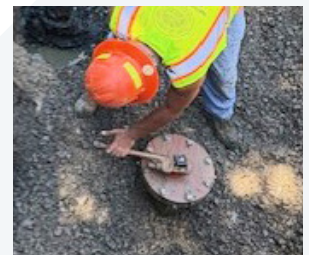
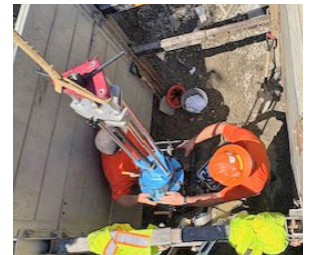
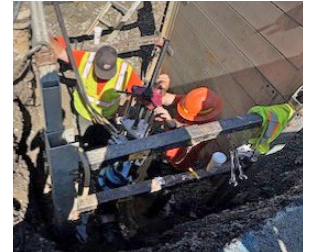
To overcome these challenges, Niskayuna's water department installed an 8" Hydra-Stop Insta-Valve 250. The team completed both excavation and installation within the same day, a necessary approach due to heavy traffic and site constraints.

The no-shutdown capability of the Insta-Valve 250 allowed crews to install the new valve while maintaining continuous service to local businesses, the school, and nearby residents. Despite the tight workspace and proximity to the gas main, the installation proceeded smoothly and safely, demonstrating the valve's adaptability in complex field conditions.

PROJECT IMPACT

The project's success provided the Town of Niskayuna with a new, reliable control point that eliminated dependence on older valves and improved the system's overall manageability. By using the Insta-Valve 250, the utility avoided doubling the number of homes affected during future shutdowns and eliminated the risk of widespread service interruption.

The installation showcased how Hydra-Stop's technology empowers utilities to perform essential upgrades in even the most challenging environments—safely, efficiently, and without disrupting the community.



The valve installation went very smoothly and was much easier than shutting down the main, which would have affected customers. — **Anthony Scavia, Water & Sewer Maintenance Supervisor, TOWN OF NISKAYUNA**



HYDRA-STOP
▶ FROM PENTAIR

144 TOWER DRIVE SUITE A, BURR RIDGE, IL 60527
PH: 708.389.5111 | E: CONTACT_US@HYDRA-STOP.COM | HYDRA-STOP.COM