

INSTA-VALVE 250 SUCCESS STORY

PROTECTING CRITICAL OPERATIONS: CONTROL POINT INSTALLATION AT A MAJOR MILITARY BASE

THE CHALLENGE

In August 2025, utility crews were tasked with creating a new control point on an 8-inch water line running adjacent to the control tower and other key facilities at a large military base in the Midwest. The mission was clear: ensure water service reliability to the control tower while preparing the system for future operational flexibility.

The challenge was that without proper isolation, any system work risked cutting off water service to the control tower and surrounding base structures—a scenario that could disrupt essential base operations and mission readiness.

THE SOLUTION

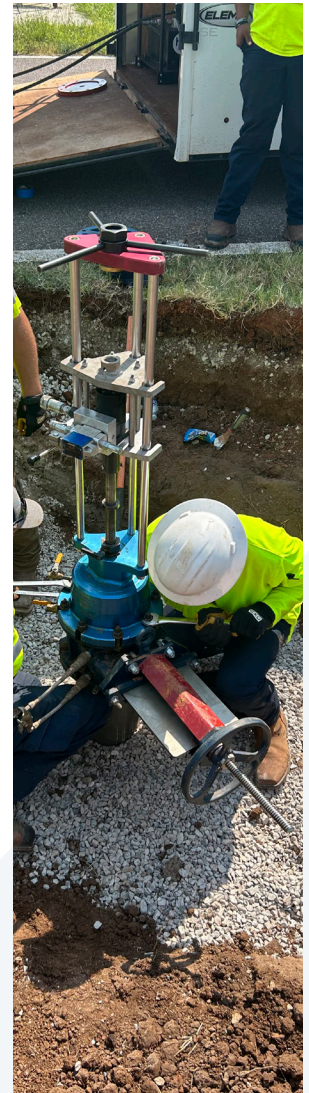
To address the issue, crews installed an 8" Hydra-Stop Insta-Valve 250. Once excavation and site preparation were complete, the installation itself took only 1.5 hours, providing a rapid and safe solution for isolating the line.

The Insta-Valve 250's no-shutdown technology allowed the valve to be installed under live system conditions, creating a new control point without service interruption. This ensured the control tower remained fully operational and safeguarded the broader base infrastructure from unnecessary downtime.

PROJECT IMPACT

The installation of the 8" Insta-Valve 250 provided the base with a reliable control point that will serve as a safeguard for future maintenance and system changes. By eliminating the risk of a base-wide shutdown, the project preserved operational readiness while also minimizing disruption to daily functions.

This project underscores the value of Hydra-Stop's technology in protecting critical infrastructure facilities, ensuring uninterrupted service even during essential system upgrades.



The Insta-Valve 250 gave us the ability to establish a critical control point without shutting down service to the control tower or other base facilities. It was an efficient solution that safeguarded operations and kept everything running without interruption. — Project Manager of Water/Wastewater

