

# INSTA-VALVE 250 SUCCESS STORY

## TARGETED ISOLATION ENABLES CONTRACTOR WORK WITHOUT RESIDENTIAL SHUTDOWNS

### THE CHALLENGE

The Metropolitan District Commission needed to support upcoming contractor work in a residential area with an active roadway while avoiding a broad water shutdown. Without a localized control point, any required system shutdown would have impacted a large residential area, resulting in extended service interruptions for customers not involved in the work.

MDC sought a solution that would allow construction activities to move forward while limiting potential shutdowns only to the immediate work zone.

### THE SOLUTION

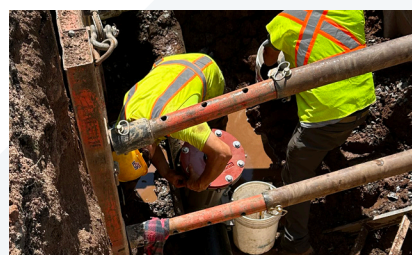
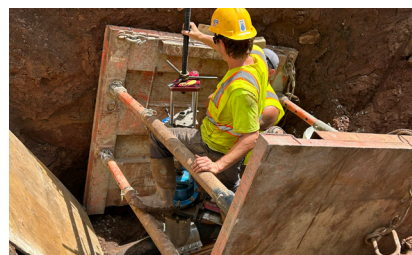
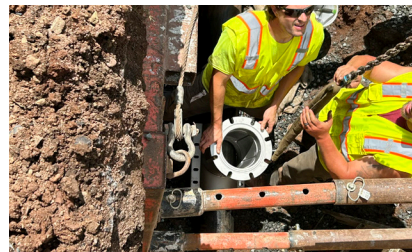
To provide targeted system control, MDC installed one 12" Insta-Valve® 250 using Hydra-Stop's no-shutdown valve insertion technology. The Insta-Valve was installed directly into the pressurized main, creating a new isolation point that allows contractors to shut down only the specific section of pipe under construction.

The installation was completed in approximately 1.5 hours, minimizing disruption in the neighborhood and along the active roadway.

### PROJECT IMPACT

The new 12" Insta-Valve 250 allows MDC to support contractor work without shutting down water service to surrounding residential areas. By limiting shutdowns to the exact work zone, the utility can keep customers supplied while still advancing critical infrastructure projects.

This installation demonstrates how Hydra-Stop's valve insertion solutions help utilities increase control, reduce customer impact, and manage system work more efficiently in residential environments.



*The Insta-Valve allowed us to maintain continuous water service for residents during construction.* — **Peter Stochlinski, Assistant Superintendent of Operations, METROPOLITAN DISTRICT COMMISSION**



**HYDRA-STOP**  
▶ FROM PENTAIR

144 TOWER DRIVE SUITE A, BURR RIDGE, IL 60527  
PH: 708.389.5111 | E: CONTACT\_US@HYDRA-STOP.COM | HYDRA-STOP.COM