

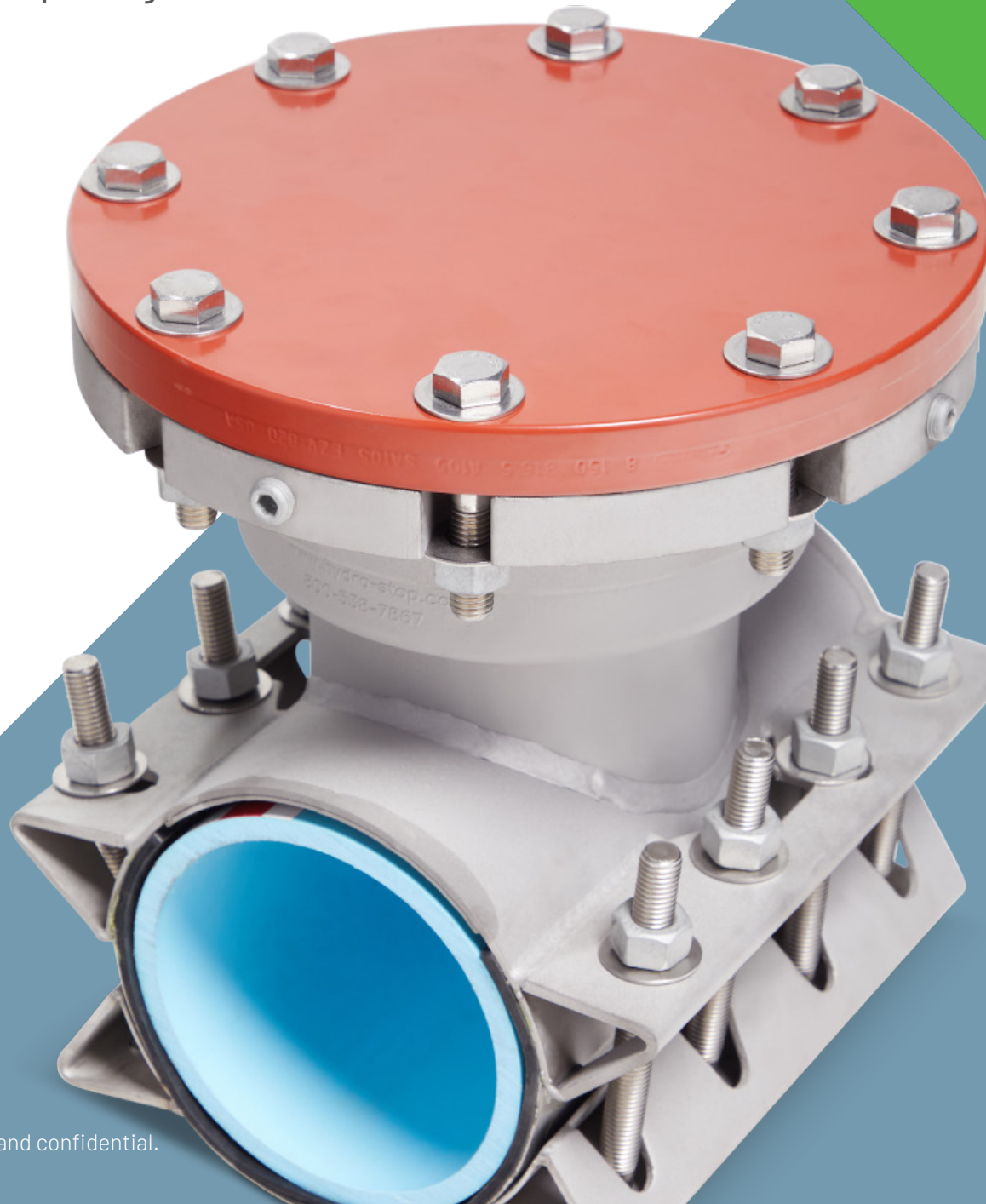
**HYDRA-STOP**

► FROM PENTAIR

# DISCOVER THE HSF 250

RELIABILITY + STRENGTH + QUALITY

4 - 12" Heavy Duty Line Stop Fittings

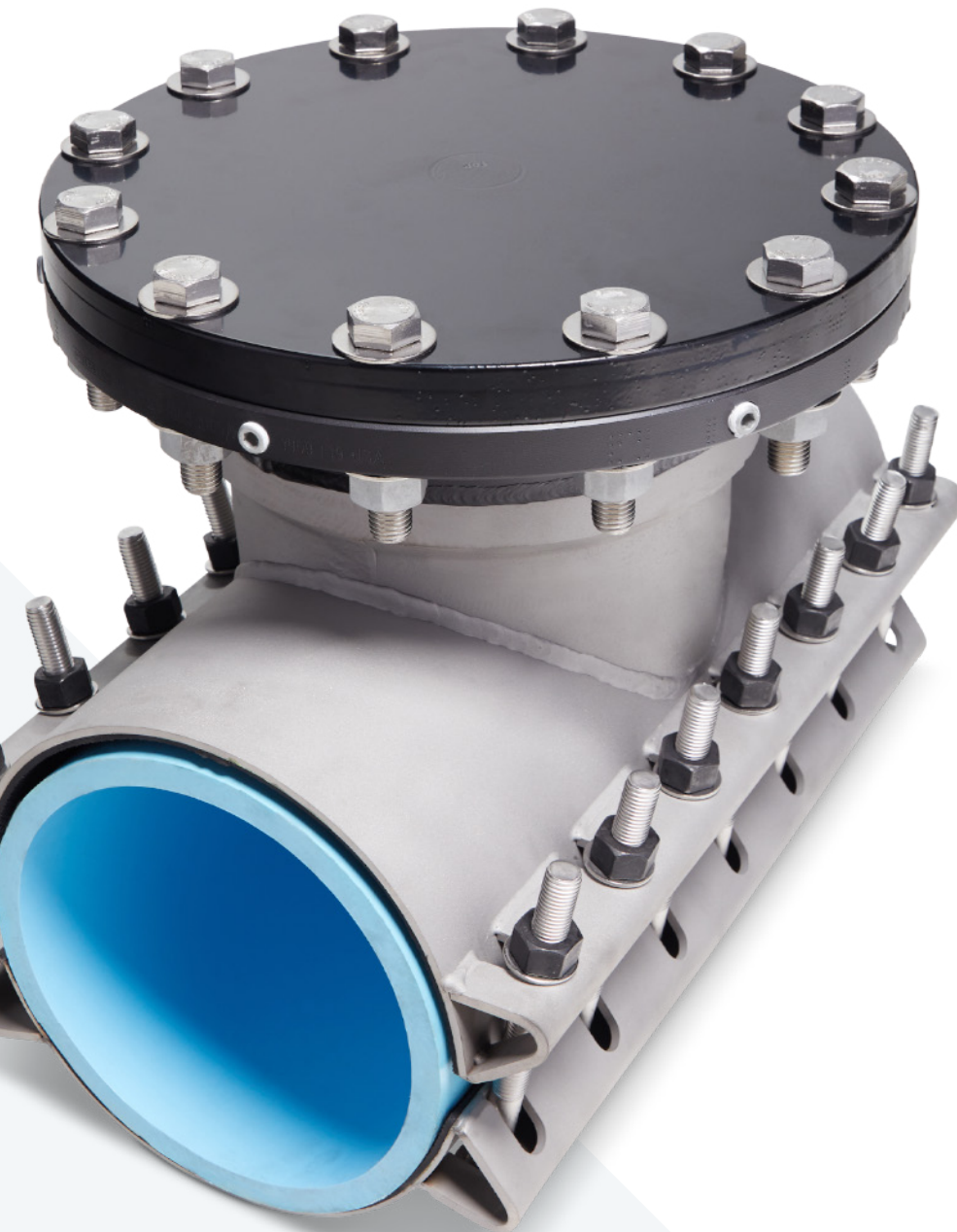


[hydra-stop.com](http://hydra-stop.com)

This document is proprietary and confidential.

# HSF 250 LINE STOP FITTINGS

When specifying your next line stop fitting, specify the HSF 250 Line Stop Fitting. The HSF 250 is the ONLY line stop fitting which offers all the following features as standard:



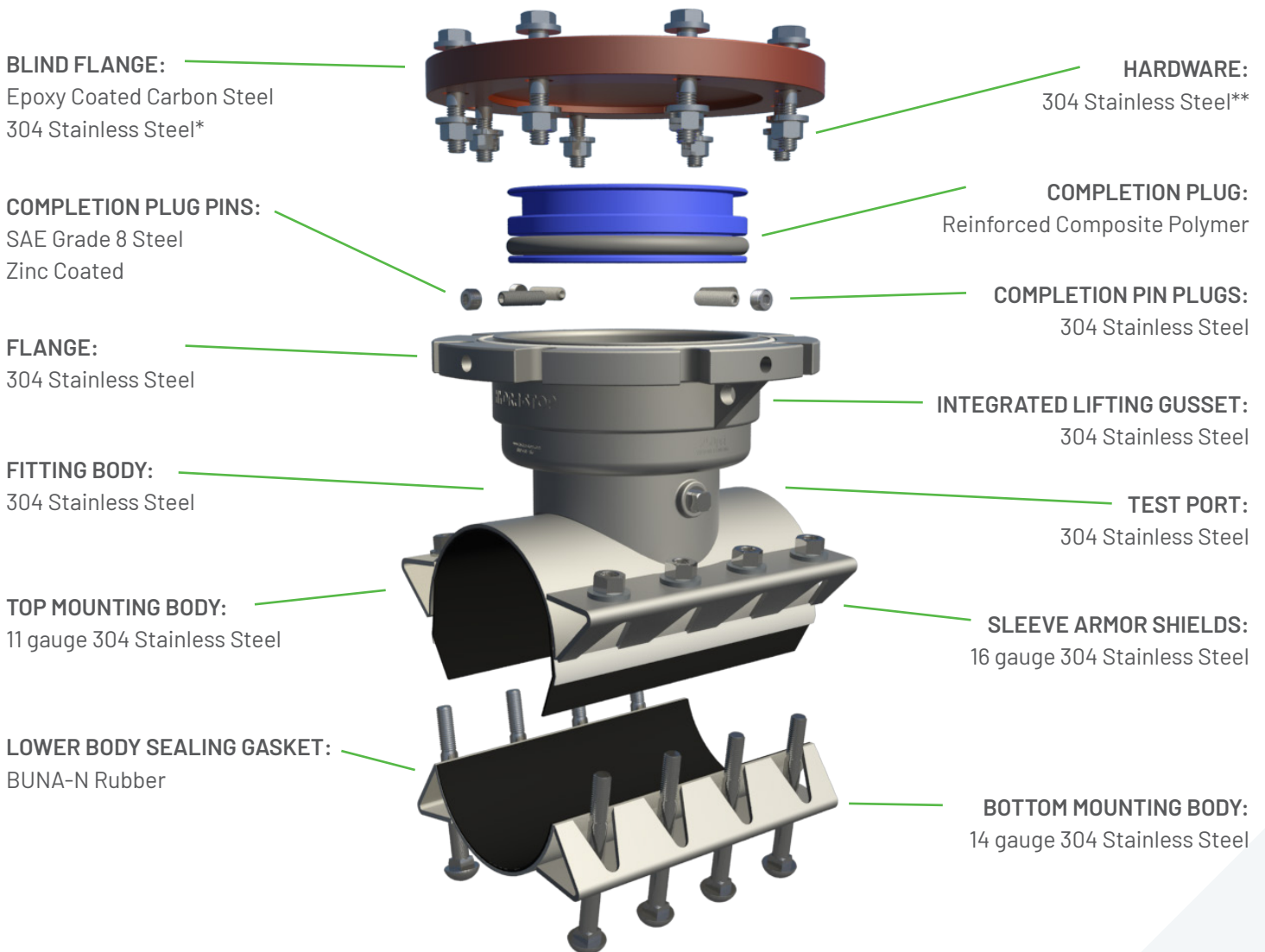
## FEATURES

- 250 psi working pressure
- Requires no system shutdown
- Eliminates 100 percent of the costs related to shutting down a system
- Maintains NSF 61 and ANSI 372 certification by UL
- Stainless steel construction
- Can be installed on all common pipe types
- No need to ream or sever the pipe, only a single tap needed for installation
- "Push-and-pin" completion plug
- AIS-compliant option available

## BENEFITS

- Increased installation opportunities
- Quality assurance
- Improved delivery
- Trouble free installation
- Emergency management
- Adaptor flange elimination
- Elimination of cross-threading
- Simplified re-stopping and elimination of "dry runs"
- Reduced installation time
- Warranty protection

# HSF 250 MATERIALS



## HSF 250 DESIGN FEATURES

- Factory Pressure Test: Each HSF 250 is pressure tested and serialized for traceability before leaving our manufacturing facility.
- Integrated Lifting Gussets: Incorporated to eliminate handling and safety concerns.
- HSF 250 Test and Working Pressures: 375 psi test pressure max. 250 psi working pressure.
- Welds: Welds fully passivated for improved corrosion resistance.
- Flange: The HSF 250 flange is engineered to operate with Hydra-Stopper installation equipment, reduces installation time, and eliminates the need for an adaptor flange.

## HSF 250 AIS Compliant

The HSF 250 Line Stop Fitting is available in a domestic option that meets the requirements specified in the **Build America, Buy America Act (BABA)**, **"Buy American Act"**, **"Buy America"**, and **"American Iron and Steel"**.

\*Domestic Stainless Steel Bonnet available at additional cost.

\*\*Domestic Stainless Steel Hardware available at additional cost.

