

INSTA-VALVE 20-24 SUCCESS STORY

CITY AVOIDS FULL SHUTDOWN OF WASTEWATER FACILITY FOR REPAIRS WITH VALVE INSERTION

THE CHALLENGE

The City of Tuscaloosa's Infrastructure and Public Services department owns, operates, and maintains the Hilliard N. Fletcher Water Resource Recovery Facility, a conventional activated sludge facility with a permitted treatment capacity of 24 million gallons per day. Raw wastewater enters the facility through the raw sewage pump station.

Isolation valves installed on the discharge segments of each pump had reached the end of their useful life and, due to the necessary continuous operation of the pump station, shutdowns and bypass pumping was not a realistic nor cost-effective solution.

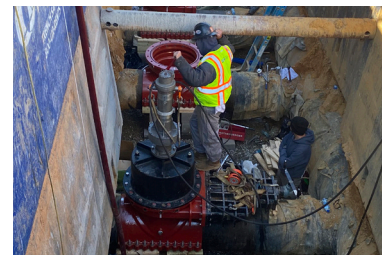
THE SOLUTION

With engineering support provided by Garver, the city contracted Water Services Group to solve their complex repair issue, and they chose the Insta-Valve 20-24 insertion valve to complete the project. First, the Water Services Group's crew mounted six (6) 24-inch Insta-Valve 20-24s—one on each live line. Then they tested, tapped, and inserted each valve one at a time—without the need to shut down the system. The entire process took under three working days.

The newly installed insertion valves allow pinpoint control to isolate the repair area to remove and replace the valves without disrupting the facility.

PROJECT IMPACT

By installing six 24-inch Insta-Valve 20-24 insertion valves, the City of Tuscaloosa was able to replace inoperable isolation valves without shutting down the wastewater facility or implementing costly bypass pumping. The targeted control provided by the Insta-Valves allowed each pumping segment to be isolated individually, avoiding service disruption while improving operational flexibility. The project also delivered long-term value by adding six permanent, reusable control points that can be capitalized and used for future maintenance.



The insertion valves provided a cost effective solution to replace the existing valves without the need for a costly, complex temporary pumping system. — Wes Cardwell, P.E., GARVER



HYDRA-STOP
▶ FROM PENTAIR

144 TOWER DRIVE SUITE A, BURR RIDGE, IL 60527
PH: 708.389.5111 | E: CONTACT_US@HYDRA-STOP.COM | HYDRA-STOP.COM