

HYDRA-STOP®

10" - 12" HSF 250 Patriot™

Line Stop Fitting Installation Instructions



Figure 1

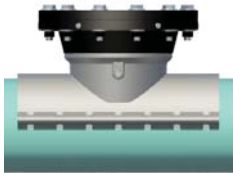


Figure 2

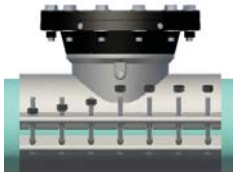


Figure 3

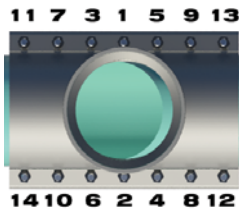


Figure 4

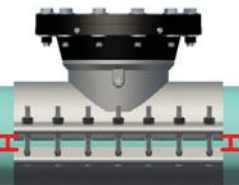


Figure 5

IMPORTANT: Read installation instructions before installing Hydra-Stop line stop fittings. Failure to follow installation instructions will void product warranty.

INSTALLATION INSTRUCTION STEPS

1. **Confirm bore of temporary gate valve is 12.5 inches.** If the bore of your temporary gate valves is smaller than 12.5 inches immediately call Hydra-Stop technical support (708-389-5111).

2. Inspect the line stop fitting to ensure no damage has occurred during shipment or storage (See Figure 1). Locate and remove completion plug and box containing stainless steel mounting hardware. Store in a clean, safe location.

3. Measure pipe outside diameter where the line stop fitting is being installed to ensure the correct line stop fitting is being used.

4. Thoroughly clean the pipe surface where the line stop fitting will be installed and inspect for flaws, i.e., gouges, protrusions, excessive corrosion, etc. Irregular surfaces should be avoided to assure maximum gasket sealing.

5. Lubricate top and bottom of pipe and mat and branch gaskets with a soap/water solution. Ensure branch gasket is adequately lubricated. Do not use grease or pipe lubricant.

6. Mount the top half of the line stop fitting on the pipe in the position required for permanent installation (See Figure 2). Use a level to ensure the flange is level. Do not rotate the top half of the line stop fitting after it is positioned on the pipe.

7. Install the bottom half of the line stop fitting over the tapered ends of the mat gasket ensuring they are flat and smooth against the pipe surface. Visually inspect gasket to ensure tapered ends are not folded or rolled under themselves. Install stainless steel bolts, washers and nuts (See Figure 3). Finger tighten, ensuring gaps between top half and bottom half of the line stop fitting are the same front to back and side to side (within 1/8").

8. Using a torque wrench, tighten bolts in proper sequence (See Figure 4). Ensure gaps between top half and bottom half of the line stop fitting are the same front to back and side to side (within 1/8") (See Figure 5). After bolts have been tightened to recommended torque wait 10 minutes to allow the gasket to fully seat and re-tighten bolts to recommended torque.

Recommended Torque:

CI / DI Pipe: 65 ft-lbs. PVC Pipe: 55 ft-lbs. AC Pipe: 60 ft-lbs.

Installation Instructions and Best Practices continued on back

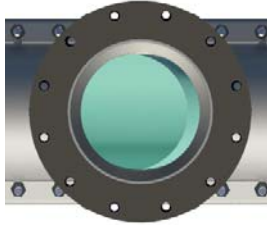


Figure 6

9. Perform pressure test to ensure a complete seal between the line stop fitting and pipe (do not use a compressable medium such as air).

Minimum Test Pressure: 1.5 times the system working pressure

Maximum Test Pressure: 375 psi

10. Remove the blind flange and flange o-ring.

11. Check inside of line stop fitting outlet to ensure gasket is properly seated and not protruding where cutter can damage it. Ensure completion plug set pins are flush with I.D. of the flange (See Figure 6).

12. Properly block (support) HSF 250 line stop fitting and ensure pipe joints are properly restrained. Proceed with line stopping operation.

For Questions, please call 800.538.7867

HYDRA-STOP FITTINGS - INSTALLATION BEST PRACTICES

- Keep nuts and bolts clean and free of debris.
- Adequately lubricate pipe and HSF 250 fitting gaskets with soap/water solution paying special attention to AC pipe. Ensure branch gasket is adequately lubricated. Do not use grease or pipe lubricants.
- Avoid rotating top half of HSF 250 once placed on pipe.
- Tighten nuts equally in no more than 25 ft-lb increments.
- After bolts have been tightened to recommended torque wait 10 minutes to allow the gasket to fully seat and re-tighten bolts to recommended torque.
- Ensure gaps between top half and bottom half of the HSF 250 are the same front to back and side to side (within 1/8").
- Check final torque with a torque wrench to ensure HSF 250 has been torqued to installation specifications.
- Do not use a pneumatic wrench to tighten bolts.
- Hydrostatically pressure test a minimum of 1.5 times the system working pressure or a maximum of 1.5 times the rated working pressure of the HSF 250.
- Block / support the pipe before installing the tapping machine.

HYDRA-STOP[®]

SOLUTIONS FOR CONTROL

144 Tower Drive, Burr Ridge, IL 60527
Phone: 708-389-5111/ Fax: 708-389-5125
Toll Free: 1-800-538-7867

Call Hydra-Stop for Technical Support at 800.538.7867 and visit us on the web at www.hydra-stop.com

Specifications subject to change without notice.